

**CASE**  
CONSTRUCTION

# T SERIES BACKHOE LOADER

570T



# T SERIES BACKHOE LOADER

570T

## **The family gets wider:**

The 570T makes available all the well known CASE exclusive features and high performances to a wider range of customers. With the 570T the return on investment is fast and easy thanks to its reliability and productivity.

## **“S-tyled backhoe”:**

The new Backhoe represent the continuity of the CASE DNA. Performances: lifting capacity, digging depth, digging force fixes a new standard threshold on this machine segment.

## **S8000 series engine form worldwide engine producer leader:**

FPT with its 600.000 engines produced per yers is the leader on the off highway engine sector. This leadership is the result of the most advanced technologies applied on the engine as well as of a long heritage of reliability and low maintenance costs.

## **Straight arm loader: above any limit**

The CASE loader ensure highest loading capacity in the market linked with best-in-class tipping height. The self leveling mechanism during the lifting phase makes the operator more productive, precise and provide better driving comfort.





# CASE CONSTRUCTION KING



## CASE DNA SINCE 1957

Case has been an innovative construction equipment market leader since 1912.

In the Spring of 1957 Case introduced Model 320, the world's first factory-built tractor loader backhoe (TLB). Since that time we have continuously developed and improved our loader/backhoe range, to meet the changing needs of our customers around the world.

- Case was the first manufacturer to develop an extending dipper, the patented Case Extendahoe
- Case was the first to offer Ride Control on a loader/backhoe
- Case was the first company to offer a Powershift transmission on a loader/backhoe
- Case was the first company to offer a backhoe loader integrated quick coupler

In 2005 Case produced its 500,000th loader/backhoe, and today we are well on the way to three quarters of a million. No other manufacturer comes close: a pedigree that guarantees strong residual values for your machine.

# T SERIES PRODUCT RANGE



## 570T

- Max weight: 7710 kg
- Net power: 64 kW / 86 hp
- Loader bucket capacity: 1000 l
- Backhoe digging depth: 4.36 / 5.58 m



## 580T

- Max weight: 8050 kg
- Net power: 72 kW / 97 hp
- Loader bucket capacity: 1000 l
- Backhoe digging depth: 4.37 / 5.43 m



## 580ST

- Max weight: 8050 kg
- Net power: 72 kW / 97 hp
- Loader bucket capacity: 1000 l
- Backhoe digging depth: 4.37 / 5.43 m



## 590ST

- Max weight: 8120 kg
- Net power: 82 kW / 110 hp
- Loader bucket capacity: 1000 l
- Backhoe digging depth: 4.67 / 5.88 m



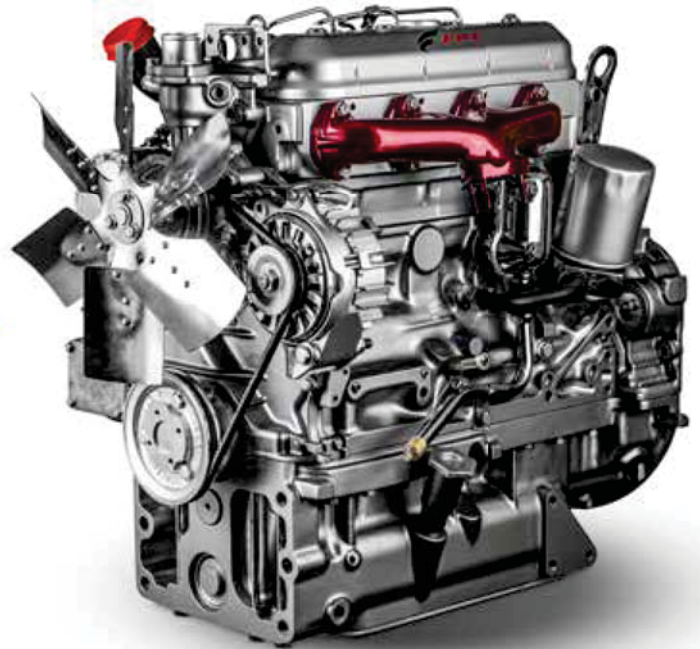
## 695ST

- Max weight: 8840 kg
- Net power: 82 kW / 110 hp
- Loader bucket capacity: 1200 l
- Backhoe digging depth: 4.59 / 5.81 m

# AT THE HEART OF THE NEW EX SERIES

**S8000: a world of applications. Since its launch the S8000 engine family has met with unequalled success. It has built a strong reputation for performance, economy and reliability with more than 3.000.000 units at work throughout the world in a wide variety of applications:**

- ✔ **CONSTRUCTION AND MATERIAL HANDLING EQUIPMENT**
- ✔ **AGRICULTURAL EQUIPMENT**
- ✔ **COMMERCIAL VEHICLES**
- ✔ **TRUCKS**
- ✔ **GENERATORS**
- ✔ **IRRIGATION PUMPS**
- ✔ **MARINE APPLICATIONS**



## A legacy of high performance

Case knows that power and performance are critical to the success of a machine. The new generation S8000 engine, developed by Fiat Powertrain Technologies Industrial (FPT Industrial), is a 3.9-liter 4 cylinders engine, turbo charged after cooled with a mechanical injection system. The S8000 provides outstanding performances such as faster response time. It is TIER III certified thanks to its EGR technology.



## FPT Industrial: technological partner

Fiat Powertrain Industrial – known around the world as FPT Industrial – is one of the world's leading players in the development and production of engines, axles and transmissions for on-road, off-road, marine and power generation applications.

The 3 S8000 engine for Case loader backhoes is manufactured on a dedicated state-of-the-art fabrication and assembly line, where advanced testing equipment puts every engine through rigorous quality checks at every key stage of production. Working closely with world leading components suppliers, we can guarantee that our engines are built to the highest quality standards, which ensure outstanding reliability and durability.



## Serviceability

The T Series has been designed to optimize serviceability. The tilting hood provides operators with fast and easy access to service points for daily maintenance.

## Extraordinary fuel efficiency

The S8000 engine is equipped with a Charge Air Cooler to improve and optimize air induction. This solution provides outstanding fuel consumption during both production and travel, and especially on backhoe digging applications.

# THE EXPERT PRODUCTIVE PARTNER

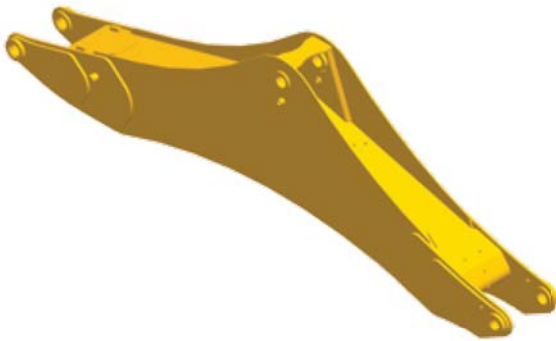
## Backhoe

The shape of the backhoe enhances the loading ability of the machine and its capacity to overcome obstacles, while ensuring a high breakout force.

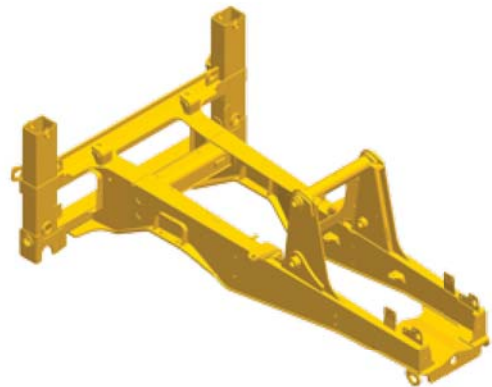


The lifting hook will allow to handle suspended objects easily and safely.

The boom and dipper are built to guarantee durability and ultrasound inspection ensures the highest welding quality and reliability.



Large box-section structures with thick, multi-plate fabrications, castings, and forgings are used in high-stress areas such as the boom nose, boom foot, boom cylinder, and stick foot to improve durability.



The robotically welded two-piece structural frame design provides a rugged and reliable foundation for the machine that improves stability, performance, and serviceability.

## Loader

CASE engineers used an innovative systems integration approach to design and improve loader arm design to meet customer needs in loading applications. The straight loader arm design with optimized line routings provides excellent visibility, best-in-class tipping height.



## Transmission

The power shuttle transmission provides four speeds forward and reverse. Hydraulically shifted clutches allow on-the-go direction and travel speed shifts. Modulation valves deliver smooth speed and directional shifts.



## Axles

4WD improves performances especially with the loader or when job site conditions are muddy and extra traction is mandatory.

The 2 WD are designed to handle extreme applications resulting in reliable performance and extended life. The new 2-cylinder steering front axle is mounted above the center pivot and can oscillate to  $\pm 13$  degrees, so that all four wheels stay on the ground ensuring great stability even on the roughest terrains.



# EXCEPTIONAL ALL ROUND VISIBILITY AND COMFORT

## A comfortable operator is a confident and productive one

- The 570T features, the largest cab in the industry, offering a comfortable working space for both the operator and a possible helper.
- Visibility is excellent to the rear and to the bucket edge. The large size glazed windows and narrow cab columns put you in command with clear, all-round visibility. The very good view to the attachment and corners improves comfort and jobsite safety, for greater productivity
- All the controls have been specially positioned to offer easy access and faster control. The large window improves air ventilation in the cab and facilitates communication to the back of the machine. The cabin has a large buddy seat along with storage compartments, mobile charger, document holder, bottle holder and radio.
- **The seat**  
The mechanical suspended seat increases operator comfort with a cushioned upper high back. It is fully adjustable to provide the optimal driving position.





## Visibility

The 6 post cab with plenty of floor to ceiling windows provides excellent visibility to improve both operator performance and jobsite safety.

## Controls

The ergonomic layout of operator controls enhances operator comfort and productivity. Easy access to the cab with ergonomically placed grab rails, walk-up steps and large platform.



# T SERIES BACKHOE LOADER

570T

## Specifications

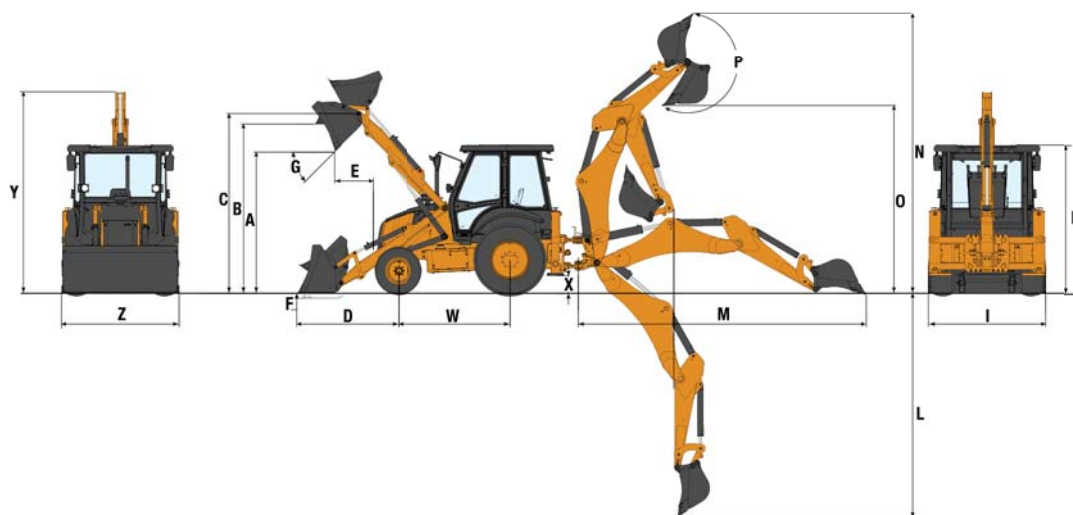
<b>ENGINE</b>		
Model code / Type	8040.45 / TCA	
Bore / Stroke	104 x 115 mm	
Displacement / Compression ratio	3.9 l / 18.3:1	
Horsepower - rated at 2200 RPM	86 hp	
Maximum torque at 1300 RPM	402 Nm	
Engine speeds	2200 rated speed, full load	950 low idle speed (at no load)
<b>POWER TRAIN</b>		
<b>Transmission</b>		
Model	CARRARO 2WD TLB1 (for 570T 2 WD)	CARRARO 4WD TLB1 (for 570T 4 WD)
Type	Power Shuttle with 4 forward and 4 reverse travel gears	
Gear	Forward (speed kmph)	Reverse (speed kmph)
1st - 2nd - 3rd - 4th	6.2 - 10 - 20.7 - 39.2	7.4 - 12 - Not Recom. - Not Recom.
<b>FRONT AXLE</b>		
<b>2 Wheel Drive (Standard)</b>		
Model	CNH PS1300	
Type - Oscillation	Steering - +/- 10.5 °	
<b>4 Wheel Drive (Optional)</b>		
Model	CARRARO 26.17	
Type - Oscillation	Steering - +/- 8 °	
<b>REAR AXLE</b>		
Model for 570T 2WD and 4 WD	CARRARO 28.32M	
Type - Differential lock	Rigid - Electrical / Mechanical	
<b>BRAKES</b>		
<b>Service Brakes</b>	Type: wet multi-discs / Nr. of discs: 6	
<b>Parking Brakes</b>	Type: Manual, with lever	
<b>TYRE SIZE RECOMMENDED</b>		
Standard	9.0 x 16 - 16 PR front	16.9 x 28 - 12 PR rear
Heavyduty	12.5 x 18 - 12 PR front	14 x 25 - 20 PR rear
<b>HYDRAULIC SYSTEM</b>		
Type	Open center with double gear pump	
Flow rate	123 lpm @2200 RPM	
Pressure	210 Bar	
<b>STEERING</b>		
Type	Power Steering	
System pressure / Displacement	140 bar / 125 cc	
Turning radius (outside of the bucket)	4600 mm with brake	5550 mm without brake
Tread width	1884 mm front	1697 mm rear
<b>SERVICE CAPACITIES</b>		
Engine oil	11 ltr	
Transmission oil	16 ltr	
Rear axle oil	18 ltr	
Hydraulic oil	130 ltr	
Fuel tank	142 ltr	
Coolant	20 ltr	



# EX SERIES BACKHOE LOADER

570T

## General Dimensions Standard Dipper



### LOADER

A	Dump height	mm	2732
B	Load over height	mm	3275
C	Hinge pin height	mm	3478
D	Reach at ground	mm	1980
E	Reach at full height-bucket dumped	mm	751
F	Below ground level-dig depth	mm	106
G	Dump angle	°	45
	Maximum lifting capacity @ max height	kg	3700

### BACKHOE

L	Max.dig depth	mm	4363
M	Reach ground level to swing center	mm	5574
N	Max working height	mm	5455
O	Max load over height	mm	3636
P	Bucket rotation	°	204
	Bucket breakout force	kgf	5630
	Dipper digging force	kgf	4300

### OPTIONAL BUCKETS

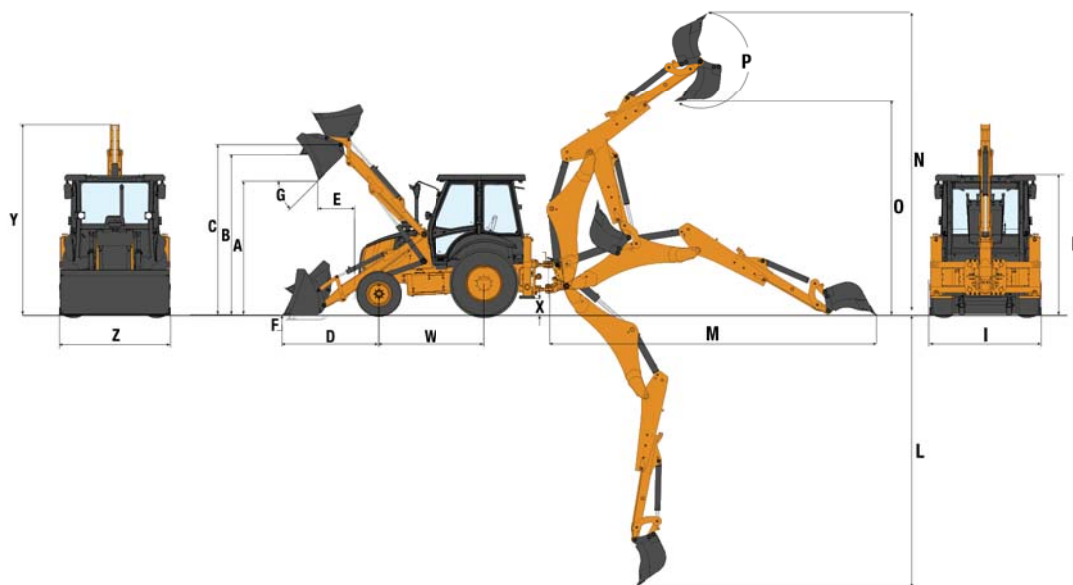
	Capacity (SAE L)
Loader GP	1000
Loader GP	1100
Loader	1200
4 x 1 Loader	1000
12" (300 mm) backhoe trenching	80
18" (450 mm) backhoe trenching	120
24" (600 mm) backhoe trenching	180
30" (760 mm) backhoe trenching	260
36" (910 mm) backhoe trenching	300

### OVERALL DIMENSIONS AND WEIGHTS

H	Cab height	mm	2868
I	Overall width	mm	2271
	Overall operating weight	kgs	7710
W	Wheel base	mm	2181
X	Minimum ground clearance	mm	399
Y	Overall height (Transport)	mm	3901
Z	Width over bucket (Transport)	mm	2277

\* Operating weight with 1 Cum loader bucket and 0.26 Cum backhoe bucket, standard dipper, 80 Kg operator and full fuel tank.

## General Dimensions Extendhoe Dipper



### BACKHOE

L	Max.dig depth	mm	5583
M	Reach ground level to swing center	mm	6695
N	Max working height	mm	6195
O	Max load over height	mm	4376
P	Bucket rotation	°	204
	Bucket breakout force	kgf	5630
	Dipper digging force (retracted)	kgf	4300

### Standard equipment

#### a) Instrumentation:

- Speedometer
- RPM meter
- digital hour counter
- fuel level indicator
- Engine coolant temperature gauge
- Switches for operating the working lamps, cabin fan, declutch,& hazard lamps

#### b) Electrical & Lights

- 2 Head lights in front with Parking lights & direction indications
- Cabin lights
- 2 rear working lights for backhoe operation
- Spacious battery box on RH side for easy access and maintenance

### Optional equipment

- Air conditioning
- Hammer circuit
- 4x1 multipurpose bucket
- 1.1 Cum and 1.2 Cum loader bucket with teeth
- Rotating beacon
- Front fenders



## Parts and Service

Wide network of customer support across the world.

No matter where you work, we're here to support and protect your investment and exceed your expectations. You can count on Case and your Case dealer for full-service solutions-productive equipment, expert advice, flexible financing, genuine Case parts and fast service. We're here to provide you with the ultimate ownership experience.

To locate a Case dealer or learn more about Case equipment or customer service, go to [www.casece.com](http://www.casece.com)



[www.casece.com](http://www.casece.com)

CE

Conforms to directive 2006/42/EC

